

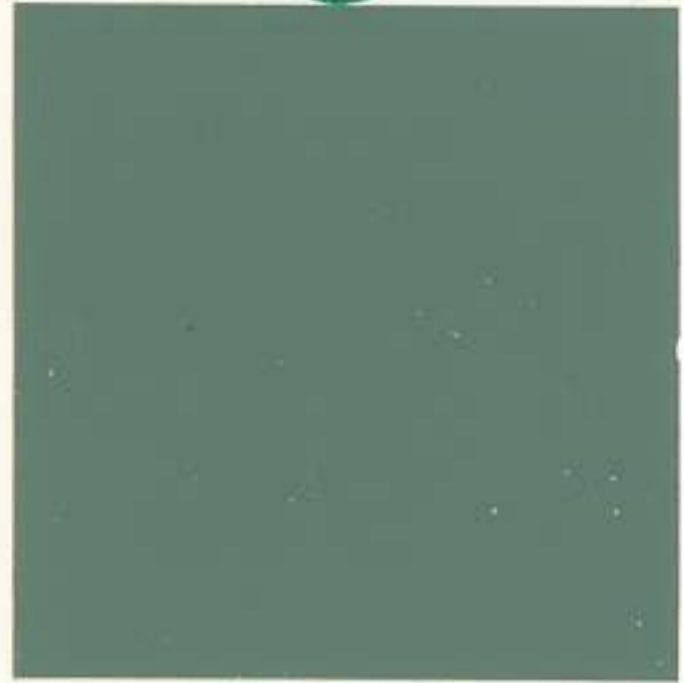
Land Rover Colour Range



Land Rover Colour Range



Bronze Green



Light Green



Sand (Export only)



Limestone



Mid Grey



Marine Blue

County Station Wagon (only)



Masai Red



Russet Brown

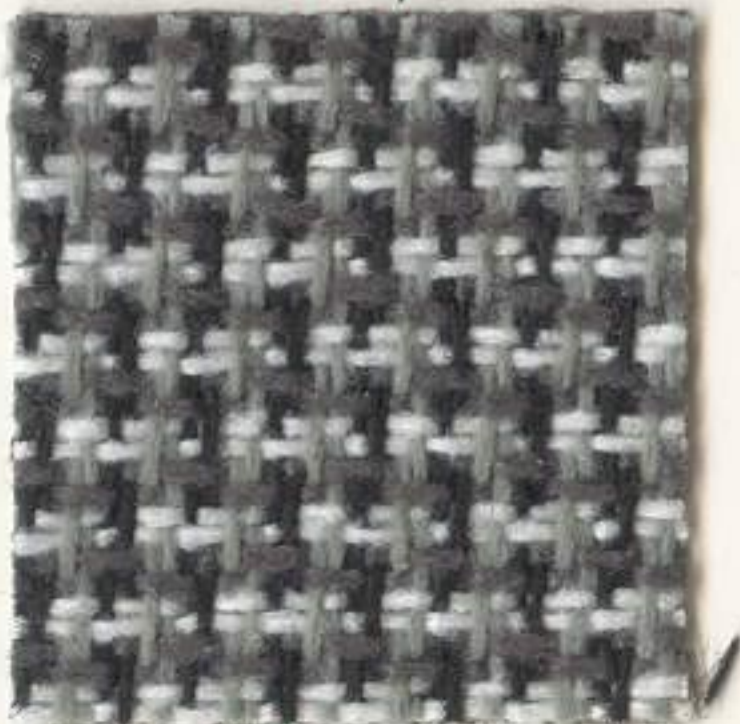
Seat Trims



Vinyl



Deluxe Vinyl



'County'

'County' Seats are
standard in both
88" and 109"
'County' models.

V8 only



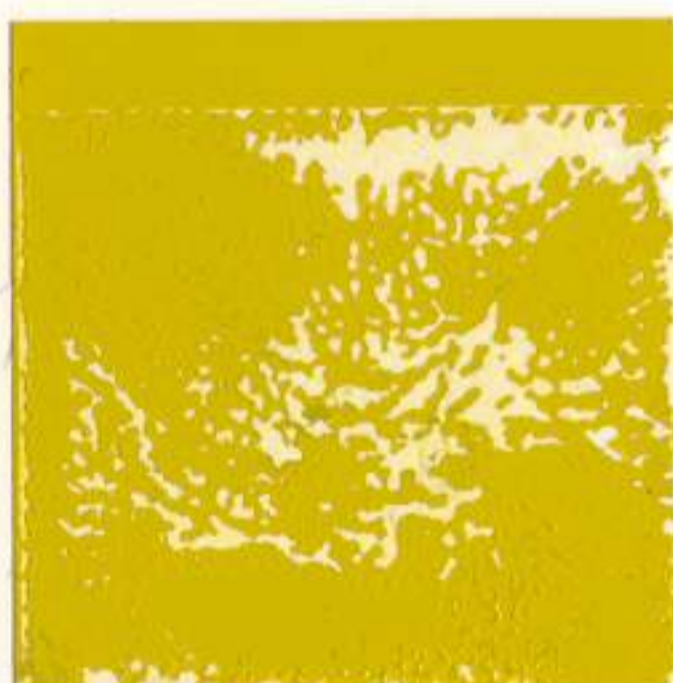
Masai Red



Pageant Blue



Java Green



Inca Yellow

The Land Rover chassis is well protected by an etch-priming operation followed by an electrophoretic paint dip.

The body is made predominantly from an aluminium alloy known as 'Birmabright', which is tougher and structurally stronger than pure aluminium and shows considerable resistance to corrosion. Panels are dipped and sprayed with 2 coats of paint. Where steel is employed, this is heavily galvanised to provide a complete protective barrier.



Land Rover Ltd

Lode Lane, Solihull, West Midlands B92 8NW, England.

LR 200/2-82/30m Printed in England.